

The Bonner Program: Community Partnerships: Part 2

***“Access to Education,
Opportunity to Serve”***



A program of:
The Corella & Bertram Bonner Foundation
10 Mercer Street, Princeton, NJ 08540
(609) 924-6663 • (609) 683-4626 fax

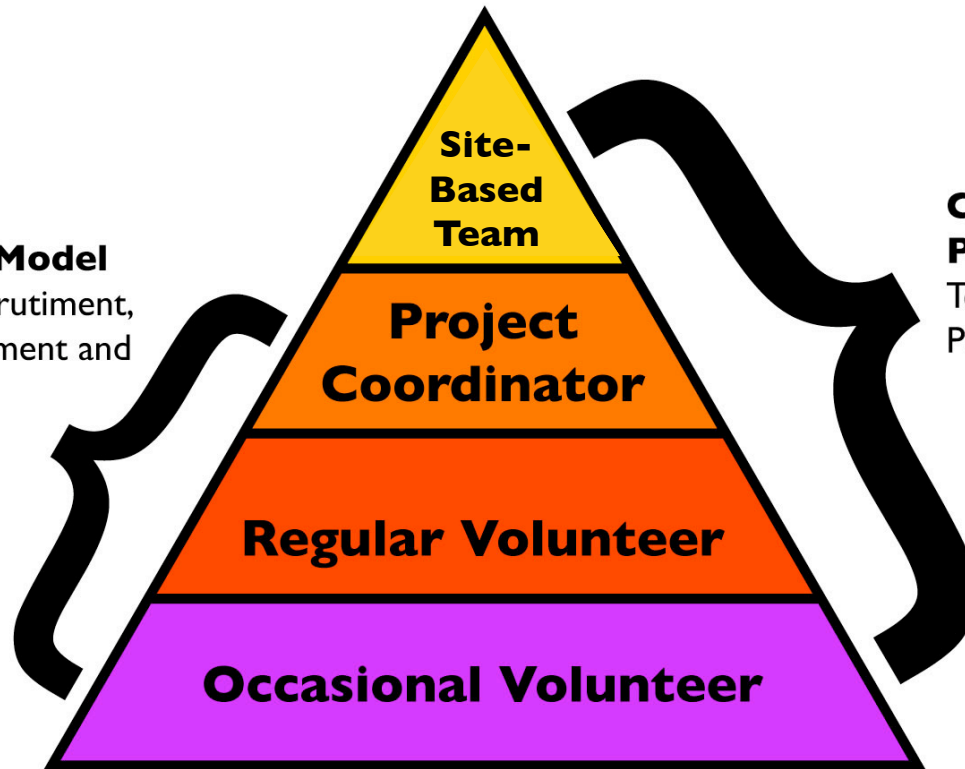
For more information, please visit our website at www.bonner.org

Higher Level



Strategic Community Partnerships: Community Partnership Model

Placement Model
Volunteer Recruitment,
Training, Placement and
Support

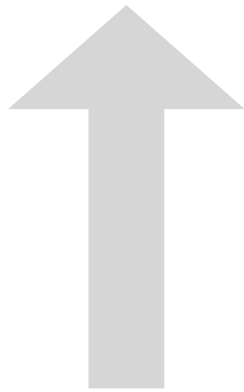


**Collaborative,
Problem-Solving Model**
Team Building, Research,
Planning and Evaluation



Strategic Community Partnerships: Higher Level Community Partnership Work

*Research
& Capacity
Building*



Direct Service

Type of Work
Vision/Strategy
Fundraising
Research / Writing / Academic Work
Outreach / Public Relations
Project Coordination
New Program Development
Improving Existing Services
Regular Volunteer Work
One-time Service Projects

Expertise



Explore

Site-Based Team



Strategic Community Partnerships: Tools for higher level partnerships

- ◆ **Site based teams**
 - Issue focus
 - Student Leadership Roles
- ◆ **Academic Connections**
 - Service Learning
 - Community Based Research
 - Public Policy Research
- ◆ **Local Summer Service**





Strategic Community Partnerships: Site-Based Team — *Team Roles*

Team Roles	Expectations
<p>Agency Site Supervisor <i>(lead agency/site administrator working with site coordinator)</i></p>	<ul style="list-style-type: none"> • attends summer orientation • collaborates on developing annual site-based plan • meets regularly with site coordinator
<p>Student Site Coordinator <i>(responsible for managing partnership with the school & serves as link to campus director or coordinator)</i></p>	<ul style="list-style-type: none"> • collaborates on developing annual site-based plan • meets regularly with site supervisor • leads weekly site-based student team meetings
<p>Student Project Coordinator <i>(responsible for particular project or event at the school)</i></p>	<ul style="list-style-type: none"> • meets regularly with site coordinator • develops project plan • recruits & supervises volunteers for project
<p>Regular Volunteers <i>(responsible for particular project within the school)</i></p>	<ul style="list-style-type: none"> • attend weekly site/project team meetings • volunteer at site
<p>Occasional Volunteers <i>(serve at one-time events at the school)</i></p>	<ul style="list-style-type: none"> • volunteer at site



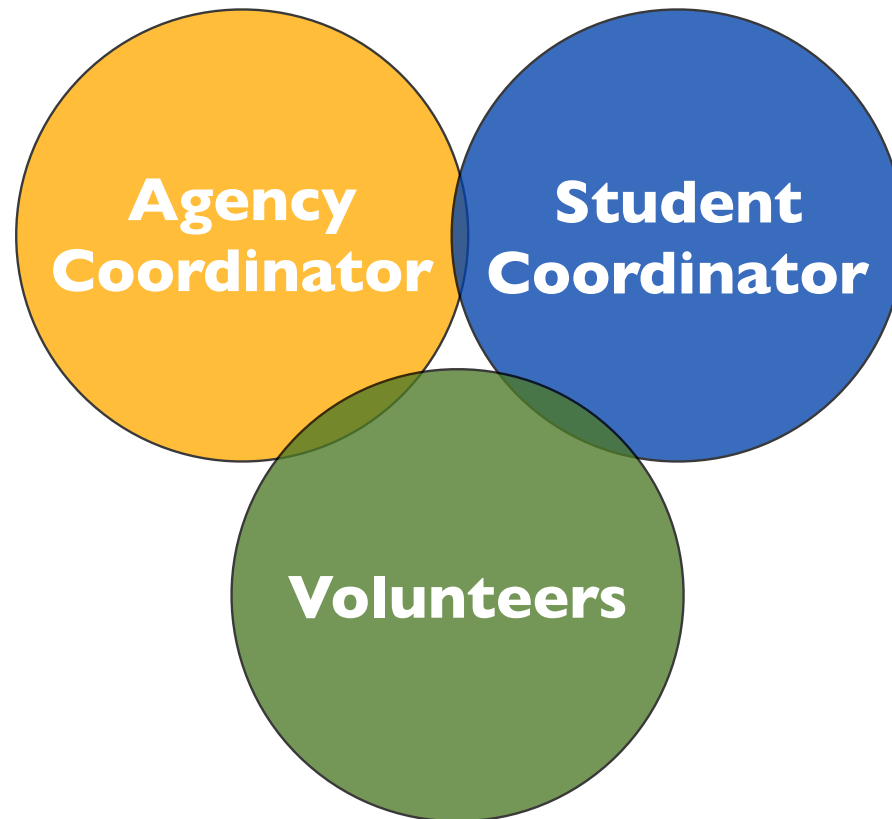
Strategic Community Partnerships: Site-Based Team — *Campus Staff Roles*

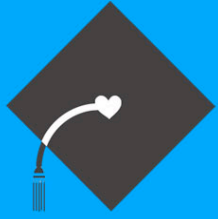
Campus Director & Coordinator Roles *in supporting....*

Agency Site Supervisor <i>(lead agency/site administrator working with site coordinator)</i>	<ul style="list-style-type: none">• organize summer orientation• advise on annual site-based plan development• connect faculty members & courses
Student Site Coordinator <i>(responsible for managing partnership with the school & serves as link to campus director or coordinator)</i>	<ul style="list-style-type: none">• train & meet regularly with site coordinators• advise on annual site-based plan development• collaborate with site coordinators to train project coordinators & regular volunteers
Student Project Coordinator <i>(responsible for particular project or event at the school)</i>	<ul style="list-style-type: none">• assist with project coordinator training• advisory role as needed
Regular Volunteers <i>(responsible for particular project within the school)</i>	<ul style="list-style-type: none">• assist with regular volunteer training (e.g., Bonner trainings)• advisory role as needed

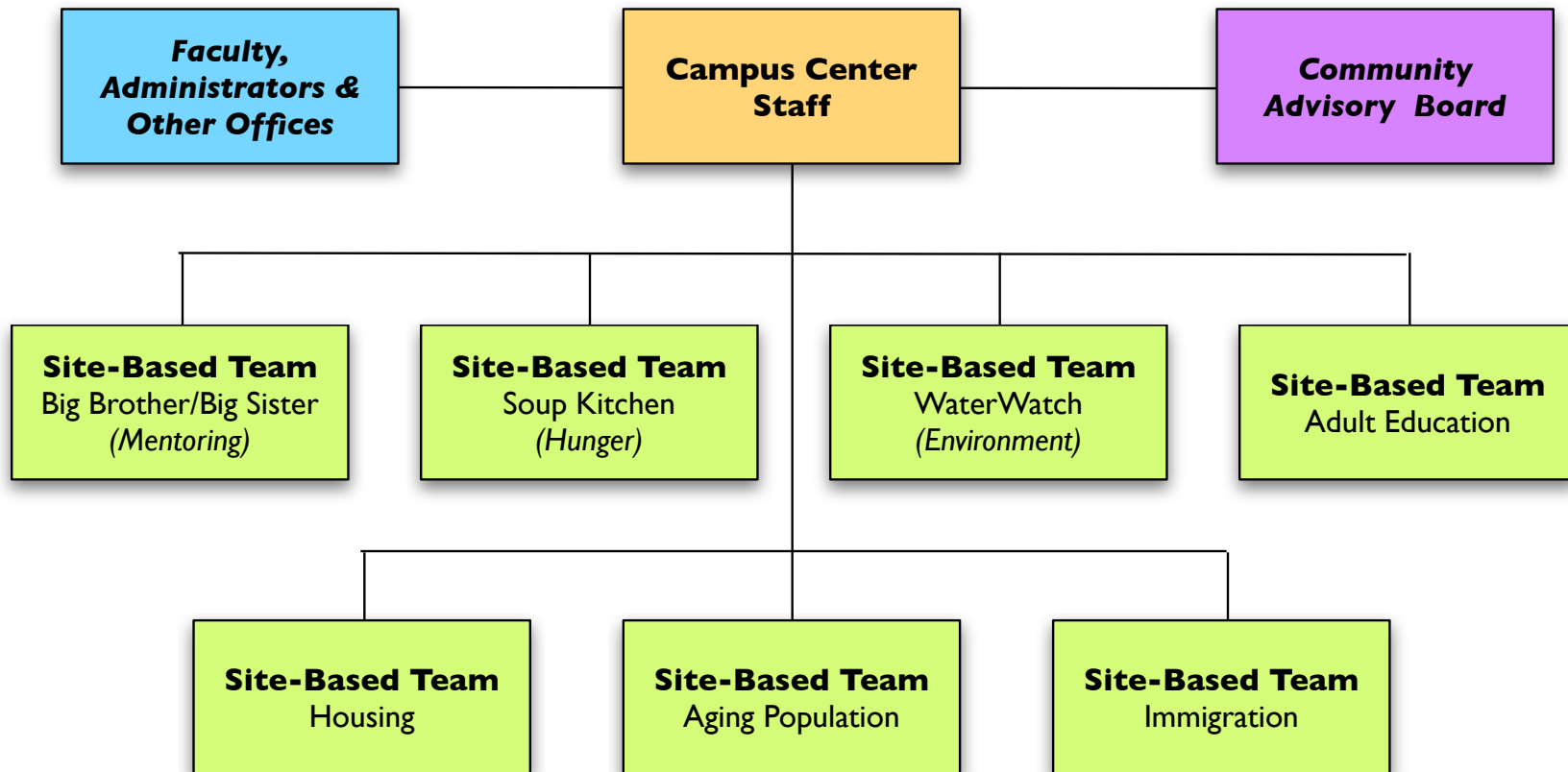


Strategic Community Partnerships: Site-Based Team





Strategic Community Partnerships: Site-Based Teams — Organization Structure

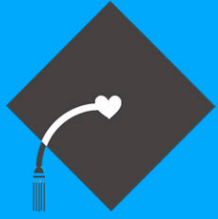




Strategic Community Partnerships: Site-Based Teams — *Advantages*

- Easier to manage placements, partnership & trainings
- Clear path for student development
- Structure enables deeper partnerships
- Work each year builds on prior year

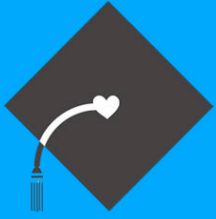




Strategic Community Partnerships: Long-Term Partnerships — *Elijah's Promise Example*



- **Beginning:** traditional soup kitchen placement
- **Later:**
 - community asset mapping project to identify local food distributors
 - survey of client identified need for bag lunches
 - researched model programs
 - implemented new bag lunch program
- **Current:**
 - examine nutritional value of menu
 - hired Bonner grads to work at Elijah's Promise



Strategic Partnerships: Resources

- Bonner Handbook
- Community Partnerships Implementation Guide
- In Good Form samples
- Civic Engagement Training Modules (*Site & Project Coordinator Training, etc.*)
- Bonner Web-Based Reporting System (BWBRs)
- “Recipes for Change”
- Community Fund

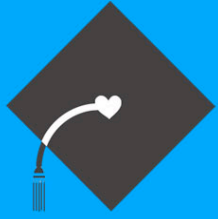
Working Session



Strategic Community Partnerships: Time to Strategize

- Draw organizational chart for your community partnership/placement roles
- Identify current or potential site-based team partnerships or issue areas

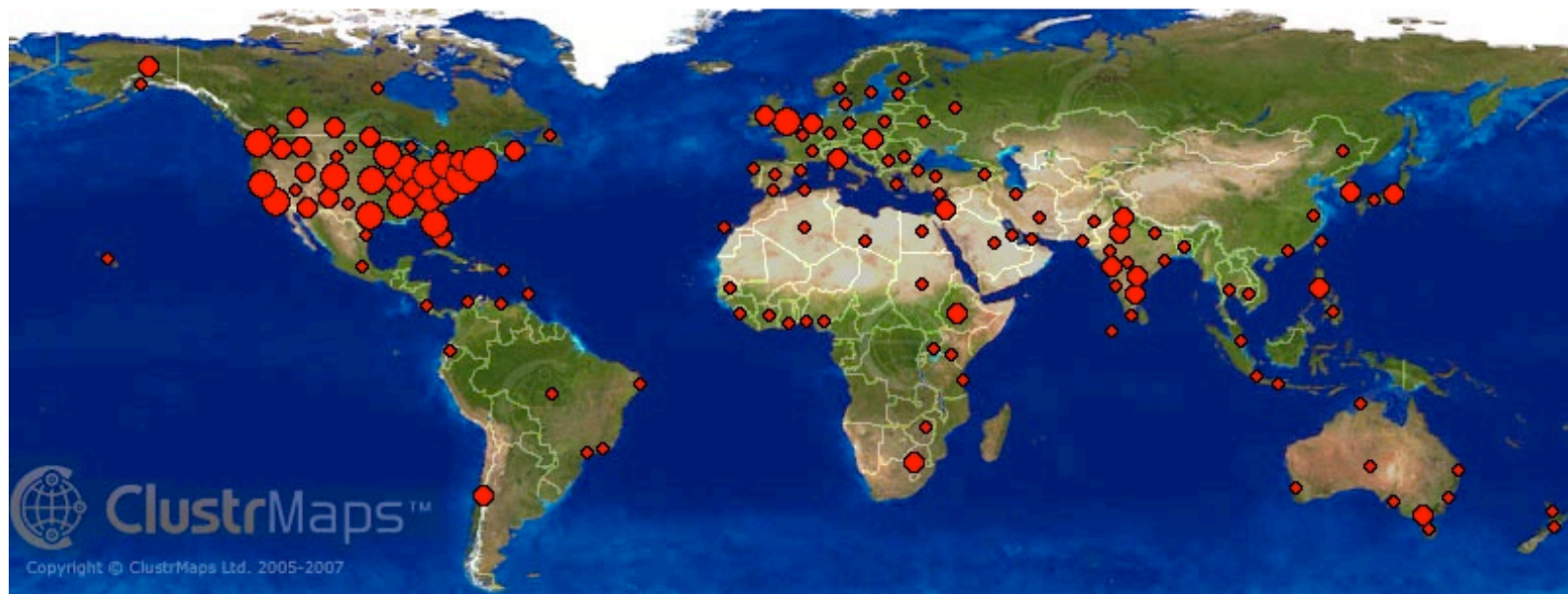




Community-based & Policy Research

Clickable map of all visitors: <http://www.cbrnet.org> (dates below)

Navigation: [Map with smaller clusters](#) | [Click on the map to zoom in](#) | [Maps Archive](#) | [Notes](#) | [Full Map Key](#)



└ distance in which individuals are clustered

Dot sizes: ● = 1,000+ ● = 100 - 999 ● = 10 - 99 ◆ = 1 - 9 visits

The above map depicts: 10,430 visits from 28 Oct 2006 to 21 Jun 2007
This map is normally updated *daily* (latest: 2007-06-21 20:13:05 GMT)

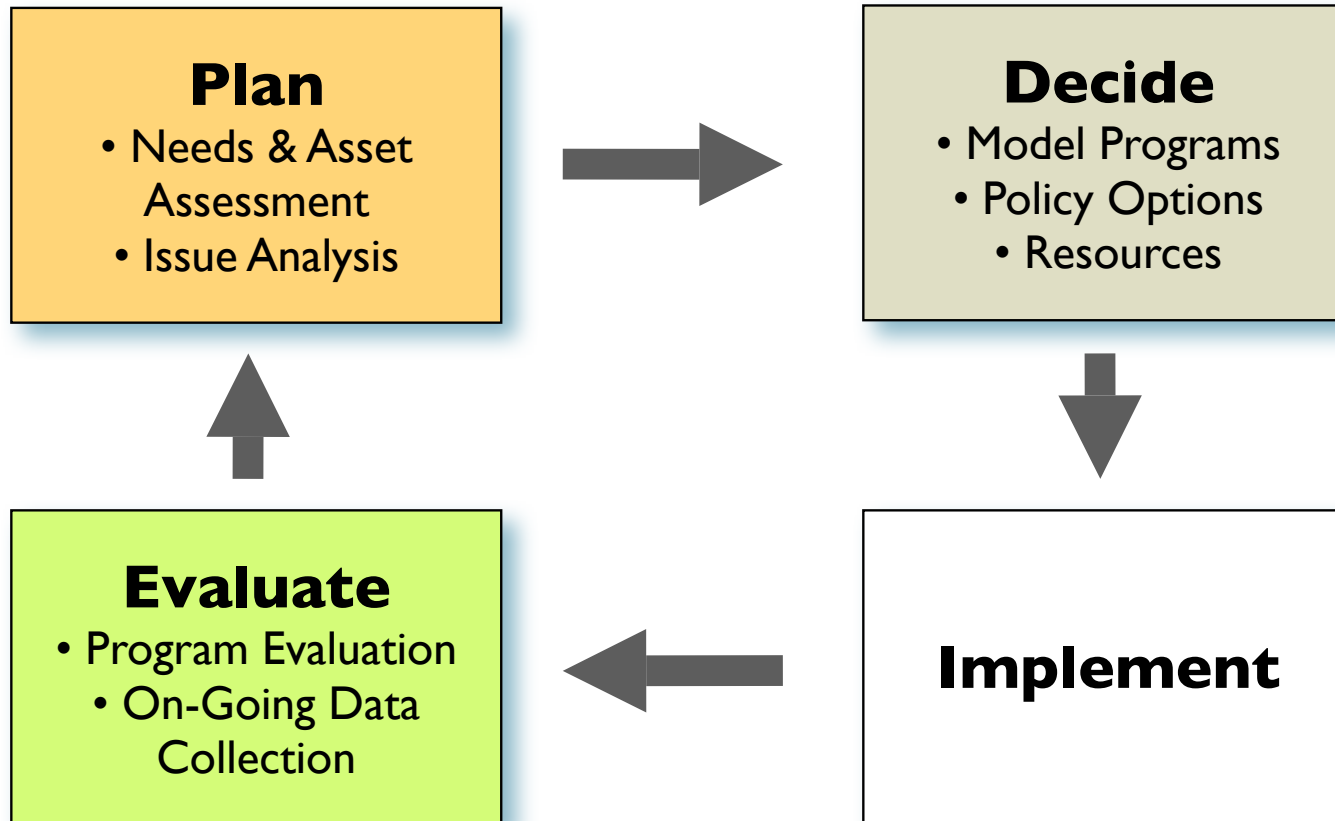
Actual update frequency may vary: see notes below.

**Running total of visits to the above URL since 28 Oct 2006: 12,055 (not necessarily all displayed - see below).
Visits on previous 'day': 22.**

Community-Based Research



Community-Based Research: Benefits — *Meeting Community Info Needs*





Community-Based Research: What is it?

A collaborative, participatory research process that embraces:

- **Research**

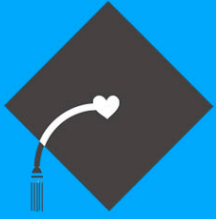
- Community agencies have information needs
- Campus partners have research tools and resources

- **Education**

- Community members have valuable local knowledge & experience
- Campus partners have theoretical and technical knowledge

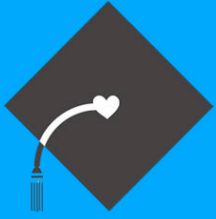
- **Action**

- Build organizational and community capacity
- Effect policy change



Community-Based Research: A Few Initial Observations

- **Community organizations** have a tremendous *need for data and analysis* to inform their work
- Many **students** are hungry for an opportunity to do *real work that matters*
- Incorporating CBR into courses *(re-)vitalizes faculty teaching* but poses challenges in time & recognition
- **Higher education institutions** are increasingly attracted to CBR's integration of *teaching, research & service*



Community-Based Research: Why do it?

- Complex social problems ill-suited to “outside expert” research alone
- Impact community capacity
- Build long-term relationship with community partners
- Effective method of teaching and learning for all participants



Community-Based Research: Principles of Practice

- Research need(s) defined by community
- Research is action-oriented
- All stages of process involve all partners equitably (faculty, students, and community)
- Strengths and knowledge of all partners appreciated and utilized
- Findings disseminated in accessible way



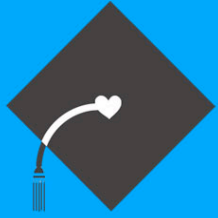
Community-Based Research: What does it take?

- Time
- Long-term vision
- Communication
- Flexibility
- Willingness to develop research process with community input



Community-Based Research: Benefits

- **Community**
 - Access to faculty expertise
 - Organizational capacity building
 - Policy change
- **Students**
 - Develop new skills
 - Improve existing skills
 - Connect classroom learning with real-world application
- **Faculty**
 - Enhanced teaching credentials
 - New venues for publishing and presenting
 - Positively impact students and community



Community-Based Research: Resources — *CBRwiki.org*

Rhackett [my talk](#) [my preferences](#) [my watchlist](#) [my contributions](#) [log out](#)

[article](#) [discussion](#) [edit](#) [history](#) [move](#) [unwatch](#)

CBRwiki
a resource for
community-based
research
practitioners

navigation

- [Main Page](#)
- [Community portal](#)
- [Current events](#)
- [Recent changes](#)
- [Random page](#)
- [Help](#)
- [Donations](#)

search

toolbox

- [What links here](#)
- [Related changes](#)
- [Special pages](#)
- [Printable version](#)
- [Permanent link](#)

Main Page

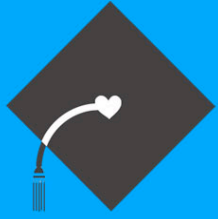
CBR Handbook Wiki

As part of the CBR Networking Initiative, this wiki has been started to establish a way for collaborative development of a **CBR Handbook** for community-based research practitioners. So, please add to or edit the pages of this site. You might also want to visit the [CBRnet.org](#) website for CBR-related news, resources, profiles of courses & projects, and other useful information.

- To edit/add pages to the CBR Handbook Wiki, we ask that you first create a user login for yourself by going to the link "create account" on the the upper right corner of this page to start this process.
- Consult the [User's Guide](#) for information on using the wiki software.
- **Ask Questions Here:** The wiki editorial staff will respond to questions posted here and then transfer the question & answer to an appropriate place within the wiki.

Contents [\[hide\]](#)

- 1 [Starting a Program/Center](#)
- 2 [Developing a CBR Course](#)
- 3 [Managing a CBR Program/Center](#)
- 4 [Evaluating a CBR Program](#)
- 5 [Growing a CBR Program](#)
- 6 [Integrating CBR Into Campus-Wide Infrastructure](#)
- 7 [What is CBR?](#)
- 8 [CBR for Undergraduates: Models & Methods](#)
- 9 [The CBR Center](#)



Community-Based Research: Resources — *CBRnet.org*

CBRnet.org

Connecting community-based research practitioners

HOME

ABOUT US

CBR IN ACTION

CBR HANDBOOK

OPPORTUNITIES

RESOURCES

Newsletter — Living Knowledge "Building Partnerships for Public Access Research (July 2007)"

The July 2007 edition of the Living Knowledge newsletter has just been published with the theme of "Building Partnerships for Public Access to Research."

The table of contents are as follows:

- Concepts and Tools for Civil Society Research: 3rd International Living Knowledge Conference
- 'Boutique de Sciences' en Rhône-Alpes. Scenario Workshop...

[read more...] Monday, July 9, 2007

Conference: Community-Based Participatory Research in Indian Country — July 27, 2007

You are invited to attend a one-day conference entitled, "Community-Based Participatory Research in Indian Country", conducted by the Faculty Development Project of the Oklahoma Native American Research Centers for Health and the University of Oklahoma Community Networks Program. This conference will be held at the Embassy Suites Hotel Tulsa-I-44 on...

[read more...] Friday, July 6, 2007

New Campus CBR Center launched at University of Victoria

University-community partnerships in Canada took a major step forward today with the official launch of an

partners

Princeton CBLI
Bonner Foundation

websites

National CBR Networking Initiative
PolicyOptions.org
PolicyOptions Wiki
Community-Campus Partnerships for Health
Community-Based Collaboratives
Research Consortium

Sign-up here

Featured Resource

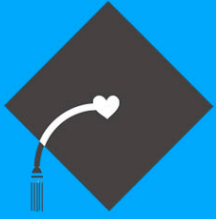
Community-Based Research & Higher Education: Principles & Practices

By Kerry Strand, Sam Marullo, Nick Cutforth, Randy Stoecker, and Patrick Donohue
San Francisco: Jossey-Bass
2003.



"Guide to incorporating a new form of scholarship into academic settings. Presents a model of community-based research (CBR) that engages community members with students and faculty in the course of their academic work."

Public Policy Issue Briefs



Public Policy CBR: Need for Policy-Related Information

- **Practitioners**
 - Too busy to keep up with information overload
 - Need practical information in digest form
- **Policymakers**
 - Need brief, up-to-date, and objective policy analysis
- **Citizens/Students**
 - Educate and inform
 - Provide context for community service



PolicyOptions Issue Briefs: Fundamental Questions

- What is the nature & extent of the problem?
- What's been tried in the past to address it?
- What's being done now?
- What are the alternative approaches?



PolicyOptions Issue Briefs: Issue Brief Template

1. Goal Statement
2. Scope of the Problem
3. Past Policy
4. Current Policy
5. Policy Options / Program Models
6. Key Organizations, Programs & People
7. Glossary of Terms
8. Bibliography



PolicyOptions Issue Briefs: Uses

- **Planning**
 - Provide access to policy options & program models to support informed decision-making
- **Issue Forums**
 - Provide background issue briefs to inform community dialogue
- **Leadership Training**
 - Educate students and others who work on issues

Implementation



PolicyOptions Issue Briefs: How to Organize

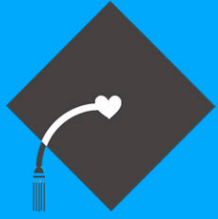
- **Seek policy topics from public sector partners & advocacy groups, too**
 - Government agencies & part-time state legislatures often don't have research capacity
- **Incorporate into class assignment**
 - Graduate or undergraduate students who research particular issue
 - Receive academic credit and opportunity to publish their research
- **Develop academic internship with faculty guidance**

PolicyOptions.org



PolicyOptions.org Web Site: Need for Community Research Portal

- **Information sources fragmented**
 - Time consuming to find relevant local, state, and national information
 - No clearinghouse or portal for policy news
- **Collaborative opportunities missed**
 - Organizations do not know what other organizations are doing
- **CBR papers not disseminated widely**
 - Broader impact of research not realized



PolicyOptions.org Web Site: Solution — Information Sharing via the Web & Email

PolicyOptions.org | Trenton, NJ

[Home](#) | [News](#) | [Research](#) | [Resources](#)

[About](#) | [Contact](#)

Monday, July 24, 2006

Search

...Trenton

- Arts, Culture & Media
- Children, Youth & Families
- Citizenship & Government
- Economy & Jobs
- Education
- Environment & Natural Resources
- Health & Wellness
- Housing & Community Development
- Justice, Crime & Public Safety

Home:

News

Available Funds

Community-Based Child Abuse Prevention Grants

7/9/06 — The U.S. Department of Health and Human Services announced a request for proposals to local communities due September 15, 2006.



- [Court Rules on Affordable House Case](#)
- [Statewide Conference on Early Childhood Education](#)
- [Report Released on Lead Poisoning in New Jersey](#)

Research

Issue Brief

Affordable Housing in Trenton

News Categories

- Funding (13)
- Legislation (29)
- Regulations (14)
- Executive Action (20)
- Courts (4)
- Publications (25)
- Meetings (23)
- People (15)

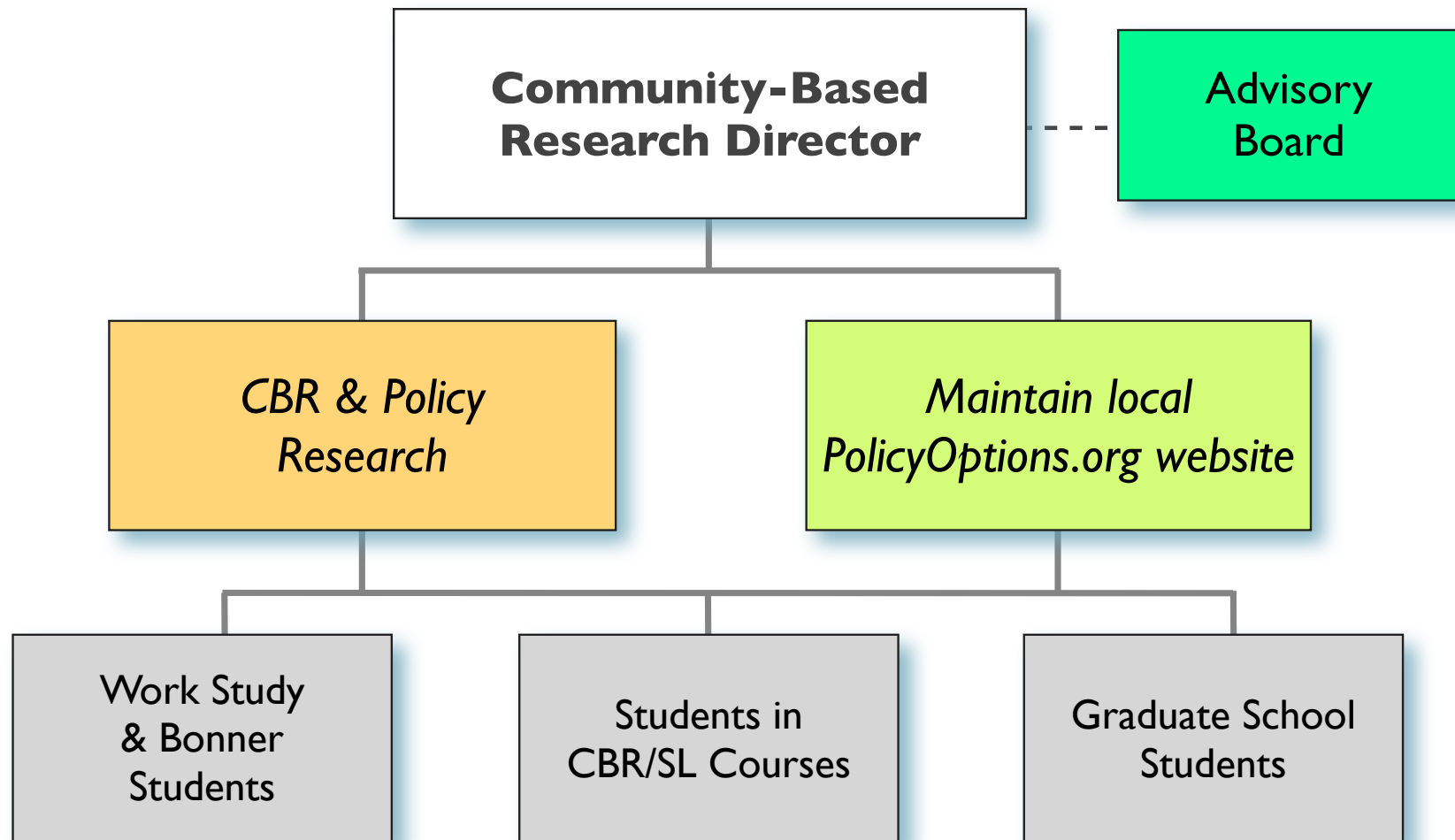
Research Categories

- Policy Options
- Issue Briefs
- Programs
- Organizations
- Individuals
- Data Sources

Structure



Community Based-Research Center: Staffing Model

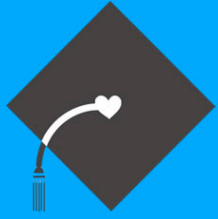


Working Session



Community-Based Research: Start-Up Suggestions

- Meet with select **community partners** to generate research questions
- Reach out to potential **faculty** with real community questions
- Start with **a few courses/projects** to learn process
- Build bridges to **other departments & centers**



Community-Based Research: Working Session

- List potential faculty &/or courses
- List potential community partners

