

# The Bonner Program: Building a Bonner Team

*“Access to Education,  
Opportunity to Serve”*



A program of:  
**The Corella & Bertram Bonner Foundation**  
10 Mercer Street, Princeton, NJ 08540  
(609) 924-6663 • (609) 683-4626 fax

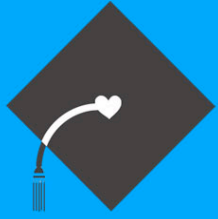
For more information, please visit our website at [www.bonner.org](http://www.bonner.org)



# Building a Bonner Team: Overview

- Bonner Team
- Program Structure Working Session
- Serve 2.0
- Implementation
- Working Session

**Bonner Team**

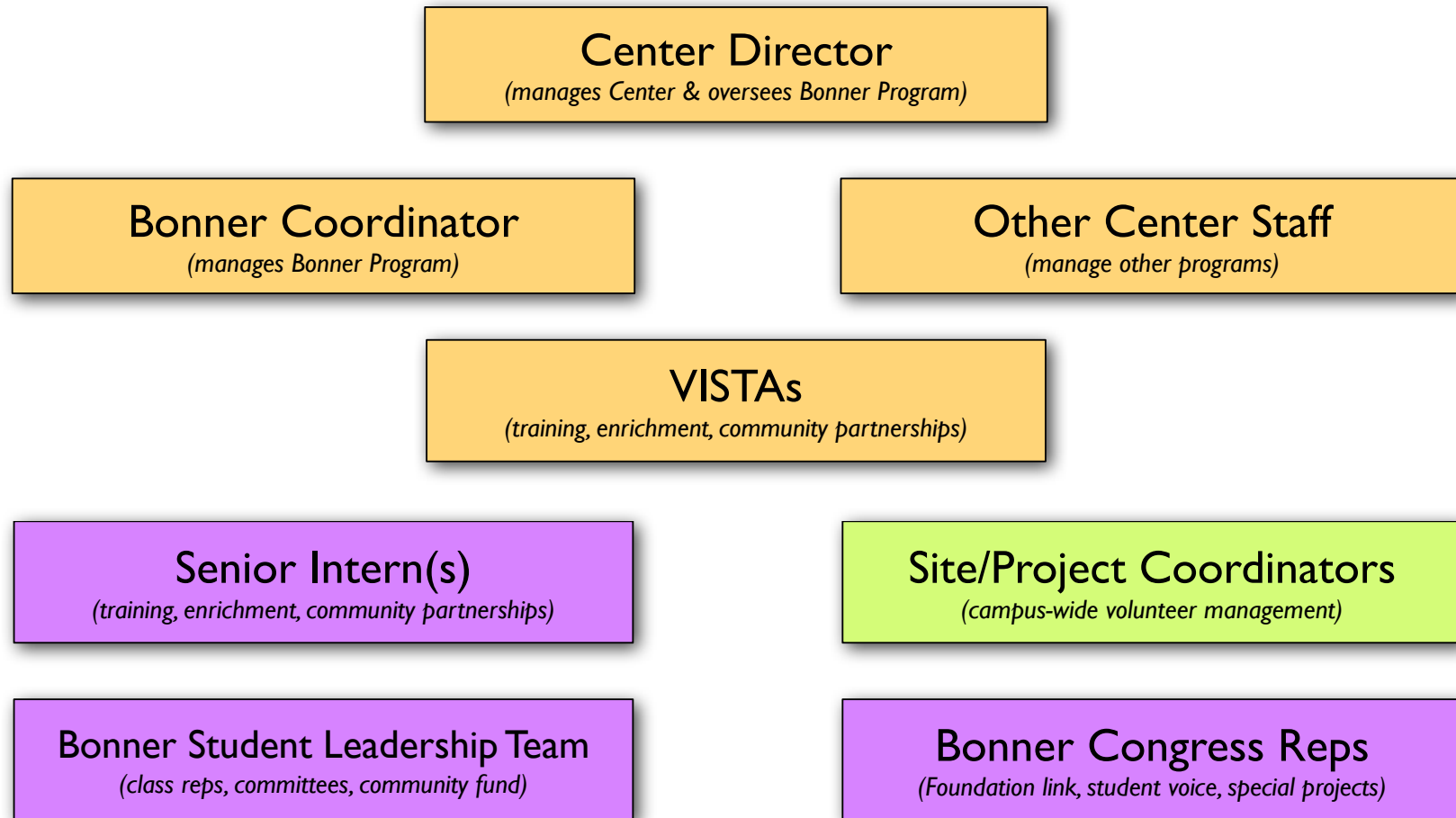


# Bonner Team: Student Leaders

<b>Position</b>	<b>Responsibility</b>	<b>Meetings &amp; Support</b>
<b>Site-Based Team Leader</b>	<ul style="list-style-type: none"> <li>- team management at service site</li> <li>- issues-based research</li> <li>- site project coordinator</li> </ul>	<ul style="list-style-type: none"> <li>- Student Handbook Live</li> <li>- student-initiated team meetings</li> </ul>
<b>Class Rep</b>	<ul style="list-style-type: none"> <li>- represent class on the student leadership team</li> <li>- familiarity with the student development model</li> </ul>	<ul style="list-style-type: none"> <li>- Student Handbook Live</li> <li>- student leadership team meetings</li> </ul>
<b>Congress Rep</b>	<ul style="list-style-type: none"> <li>- represent their Bonner program to the Network</li> <li>- bring the Network back to their Bonner program</li> <li>- function as a resource and guide</li> </ul>	<ul style="list-style-type: none"> <li>- Summer Leadership Institute</li> <li>- Fall Congress Meeting</li> </ul>
<b>Senior Intern</b>	<ul style="list-style-type: none"> <li>- plan, facilitate, and supervise Bonner meetings, trainings, and activities</li> <li>- assist staff with general program management</li> <li>- take on special projects</li> </ul>	<ul style="list-style-type: none"> <li>- Summer Leadership Institute</li> <li>- Fall Congress Meeting</li> </ul>



# Bonner Team: Program Infrastructure



# **Working Session**



## **Working Session:** Organizational Chart

- Draw existing or plan new organizational chart for student leadership positions
- Plan process & dates for selecting student leaders

**Serve 2.0**





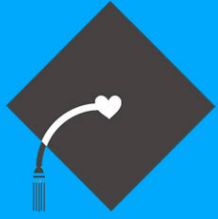
## What is Serve 2.0?

A national initiative being led by the Bonner Network to spread the use of social media in recruiting and engaging students in service.



## **Serve 2.0: Function**

- To network with other Bonner Programs
- To connect with national organizations and networks
- To plan larger scale service and issues-based events

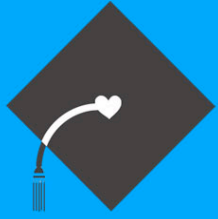


# Serve 2.0: Familiar Social Media



LIVEJOURNAL





# Serve 2.0: Unfamiliar Social Media

- Wiki
- Group Calendar
- Social Bookmarking
- Podcast
- Google Maps





# Serve 2.0: Wikis


- Collaborative hosting sites
- Post photo, embed video, share documents, make comments, add links, make private or public, invite editors

**Democracy House** rhackett@bonner.org account sign out

VIEW EDIT

## FrontPage

last edited by [Robert Hackett](#) 2 days, 2 hours ago [Page history](#)



*Middlesex County College's Democracy House is the community service and civic engagement center on campus. Through well maintained partnerships with local non-profits, excellent relationships with faculty and a corps group of students dedicated to service, Democracy House does its part to alleviate need in its community, as well as shape great citizens.*

[Facebook Group](#) | [Blog](#) | [Calendar](#) | [MCC Website](#) | [Contact Us](#)

### Wiki Contents

1. [Staffing & Administration](#)
2. [Bonner AmeriCorps](#)
  - Available Positions
  - Reporting Requirements
3. [Community Partnerships & Site-Based Teams](#) (Google Map of sites)
  - [Elijah's Promise Soup Kitchen](#)
  - [Roosevelt School](#)-Afterschool Tutoring/Mentoring
  - [Lincoln School](#)-Afterschool Tutoring/Mentoring/Comic Book Project
  - [New Brunswick Center](#)-Tax Preparation, ESL Tutoring, Events
  - [Rutgers Cook Student Organic Farm](#)-Volunteers for harvesting and other needs
  - [Salvation Army of Perth Amboy](#)-Afterschool mentoring, food bank, soup kitchen

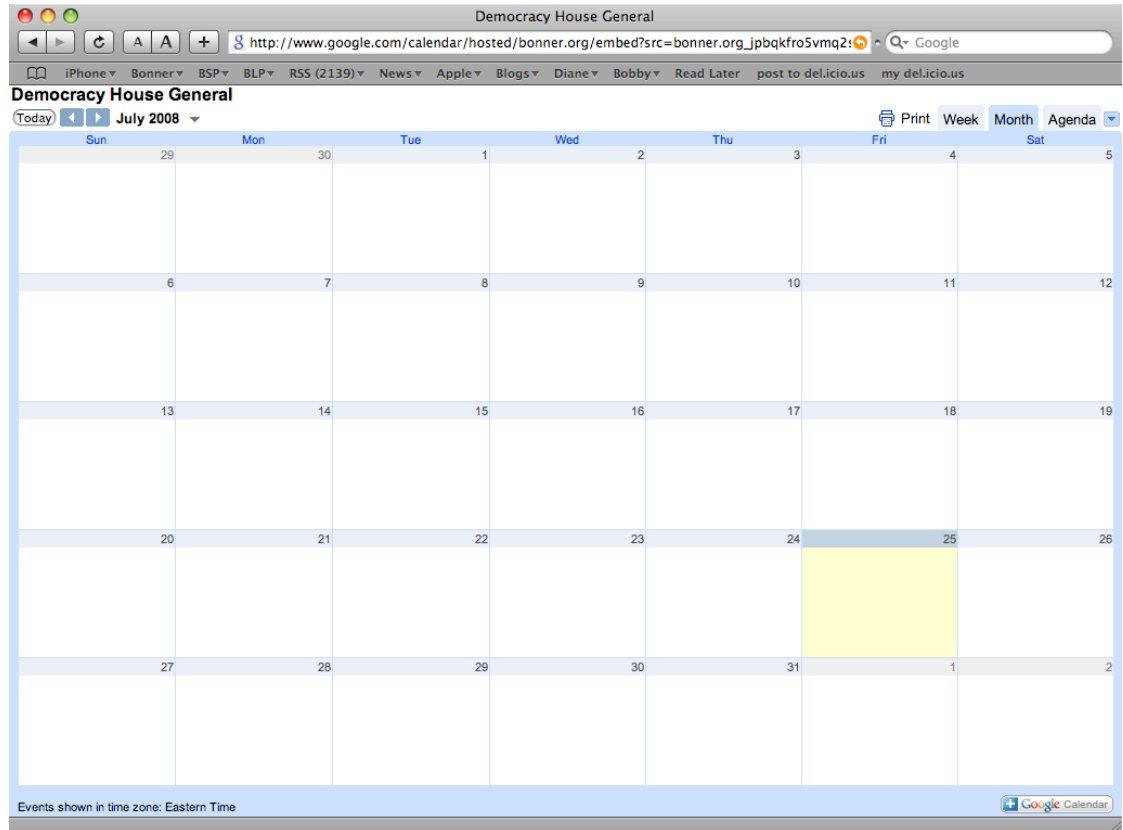
**Right Sidebar:**

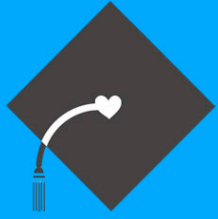
- Create a page
- Upload/view files
- Upgrade!
- Search
- Put this page in a folder
- Add Tags
- Page Security [default](#)
- FrontPage
- View all pages
- Settings
- Help
- Tell us what you think about PBwiki 2.0
- Sidebar
- Front Page
- Staffing and Administration
- Community Partners and Positions
- Recruitment
- Training
- Contact Us
- Edit the sidebar
- Folders
- No folders are available.
- Create a folder...
- Share this wiki
- Add a new writer to the wiki.
- user@email.com [Add](#)
- User settings



# Serve 2.0: Group Calendar

- Share individual schedules
- Make group schedules
- Collaborative editing like on Google calendars
- Collaborative planning like on Doodle.ch

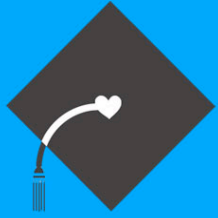




## Serve 2.0: Podcast

- Incorporate narration, music, photo into a seamless video or audio presentation
- Can be part of a series or alone
- Others may view and subscribe





# Serve 2.0: Social Bookmarking

- Consolidate bookmarks
- Share bookmarks
- Searchable “tags”

BonnerNetwork's bookmarks on del.icio.us

http://del.icio.us/BonnerNetwork

Bonner Network Blog Post to Delicious Delicious My Calendar Bonner SLI 2008 News (1006) Photo Sharing

Delicious Facebook | Message: S...

del.icio.us / BonnerNetwork /

popular | recent  
login | register | help

All BonnerNetwork's items (219)

« earlier | later » page 1 of 22

[41pounds.org | Save the planet, stop junk mail](#) save this  
to CommunityBuilding ... saved by 260 other people ... on June 25

[New American Dream Home](#) save this  
to CommunityBuilding ... saved by 900 other people ... on June 25

[Net Impact](#) save this  
to CommunityBuilding ... saved by 2 other people ... on June 25

[Campus Ecology - National Wildlife Federation](#) save this  
to CommunityBuilding ... saved by 9 other people ... on June 25

[Highlander Research and Education Center](#) save this  
to SocialJustice ... saved by 3 other people ... on June 25

[EdChange | Multicultural & Diversity Consulting, Workshops, & Training for Social Justice](#) save this  
to Diversity ... saved by 44 other people ... on June 25

[Resources | Civic Engagement](#) save this  
to CivicEngagement ... saved by 5 other people ... on June 25

[Association of American Colleges and Universities | Diversity Resources](#) save this  
to Diversity SocialJustice ... saved by 2 other people ... on June 25

[The UN Millennium Development Goals](#) save this  
to InternationalPerspective ... saved by 367 other people ... on June 25

[idealist.org](#) save this  
to InternationalPerspective SocialJustice ... saved by 2821 other people ... on June 25

« earlier | later » page 1 of 22

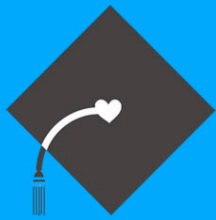
**tags**

- 1 BonnerPartner
- 1 BuildingaMovement
- 48 CenterSites
- 7 CivicEngagement
- 8 CommunityBuilding
- 8 Diversity
- 5 InternationalPerspective
- 49 ProgramSites
- 79 SchoolSites
- 1 SLI2008
- 10 SocialJustice
- 11 SpiritualExploration

**tag options**

- » view as cloud | list
- » sort by alpha | freq
- » use minimum: 1, 2, 5
- » show | hide bundles





# Serve 2.0: Video



robertkhackett | (0) | Account | QuickList (0) | Help | Log Out | Site:

Home

Videos

Channels

Community

Videos

Search

[advanced](#)

Upload

## Democracy House



Rate: ☆☆☆☆☆ 0 ratings

Views: 76



From: **robertkhackett**  
Joined: 2 months ago  
Videos: 1

Subscribe

Added: **April 10, 2008** ([More info](#))

Lead campus in Serve 2.0 Working Group, in part...

Embed: [Customize](#)

<object width="425" height="355"><param name="movie" value="h

Edit Video

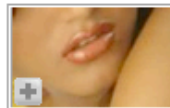
Video Owner Options

▶ More From: robertkhackett

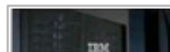
▼ Related Videos



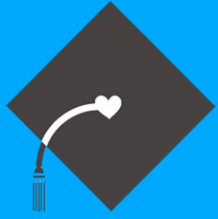
**Cool Conference**  
04:42 From: SPHEREGeneration  
Views: 60



**Sunny Leone - Hottest Indian Porn Star**  
([www.sunnyleone.com](http://www.sunnyleone.com))  
01:58 From: thatsfunny01  
Views: 332,215

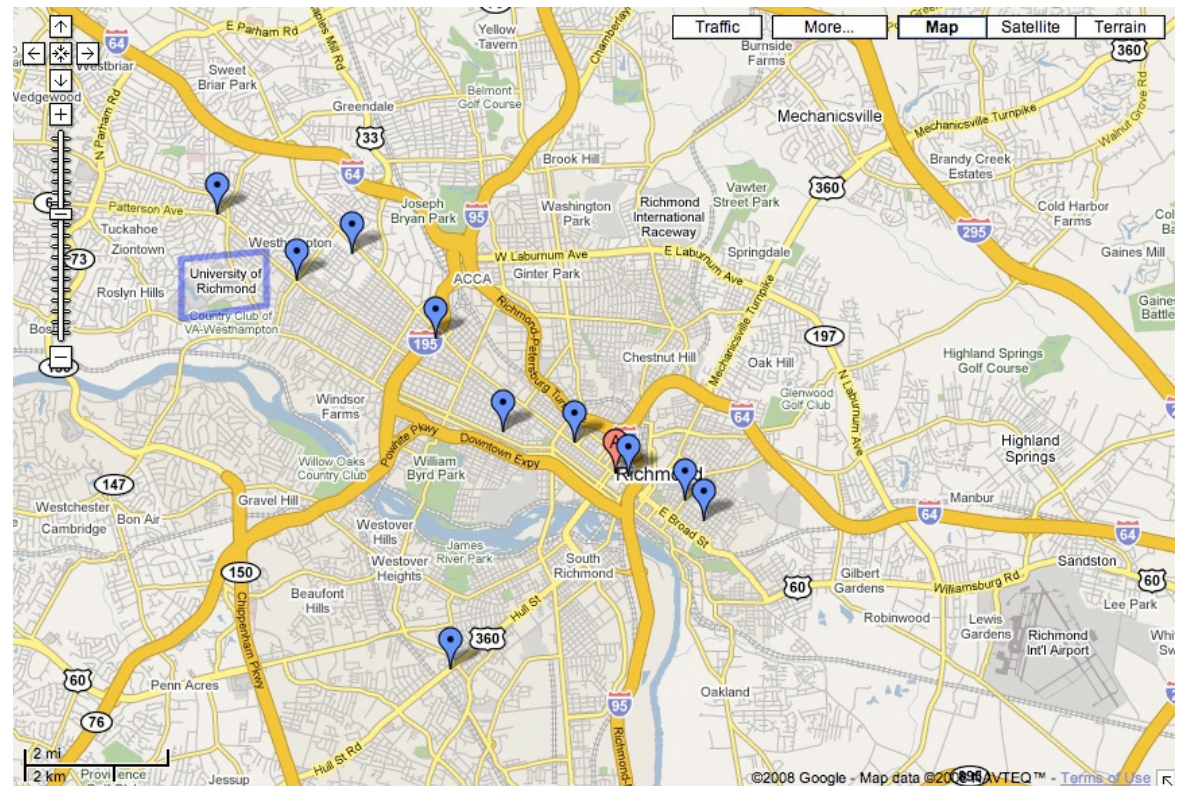


**IBM's New "Green" Web 2.0 Server**  
Design for Web Companies



## Serve 2.0: Google Maps

- Collaborative map
- Searchable placemarks
- Community mapping





# Serve 2.0: Resources

rhackett@bonner.org  
account sign out

VIEW EDIT

## FrontPage

last edited by Robert Hackett 3 days, 15 hours ago Page history

# Serve2.0

*This wiki has been created to share ideas on how to utilize social media — also known as Web 2.0 — to drive student service and civic engagement on college campuses. Click here for more on [how to use this wiki](#). If you want an account to edit the wiki or if you have any questions, please contact Bobby Hackett at [rhackett@bonner.org](mailto:rhackett@bonner.org).*

### CONTENTS

- [Ideas & Examples for How Social Media Tools Can Be Used](#)

By Type	By Function
<ul style="list-style-type: none"><li>• <a href="#">Facebook</a></li><li>• <a href="#">Other Social Networking Platforms</a></li><li>• <a href="#">Blogs</a></li><li>• <a href="#">Wikis</a></li><li>• <a href="#">Videos</a></li><li>• <a href="#">Photos</a></li><li>• <a href="#">Podcasts</a></li><li>• <a href="#">Social Bookmarking</a></li><li>• <a href="#">Group Calendar</a></li><li>• <a href="#">Group Email Lists</a></li><li>• <a href="#">Web Docs</a></li><li>• <a href="#">RSS</a></li><li>• <a href="#">Mash-Ups</a></li><li>• <a href="#">Bonner Web-Based Reporting System (BWBR)</a></li><li>• <a href="#">PolicyOptions.org</a></li><li>• <a href="#">Fundraising Platforms</a></li><li>• <a href="#">Second Life</a></li><li>• <a href="#">Webcams</a></li><li>• <a href="#">Twitter</a></li></ul>	<ul style="list-style-type: none"><li>• <a href="#">Recruitment</a></li><li>• <a href="#">Training, Education &amp; Enrichment</a></li><li>• <a href="#">Reflection</a></li><li>• <a href="#">Project Management</a></li><li>• <a href="#">Publicity</a></li><li>• <a href="#">Fundraising</a></li><li>• <a href="#">Intra-Campus Networking and Coordination</a></li><li>• <a href="#">Local, Regional &amp; National Campus Networking</a></li><li>• <a href="#">Policy Research, Education &amp; Advocacy</a></li></ul>

- [Background on Web 2.0](#): provides descriptions on the different social media tools.
- [Background on Serve 2.0](#): attempts to define Serve 1.0 vs Serve 2.0
- [Campus Surveys of Social Media Usage](#): requests survey input and provides results

**Create a page**  
**Upload/view files**  
**Upgrade!**

FrontPage  
View all pages  
Settings  
Help

Tell us what you think about PBwiki 2.0

Search

Put this page in a folder  
Add Tags  
Page Security **default**

#### Sidebar

- [Front Page](#)
- [Background on Web 2.0](#)
- [Background on Serve 2.0](#)
- [Leadership Roles & Training](#)
- [Budget Needs and Ideas](#)
- [Campus Profiles](#)
- [Campus Surveys](#)
- [Discussion Room](#)

Edit the sidebar

#### Folders

- Campus Profiles
- Create a folder...

#### Share this wiki

Add a new writer to the wiki.

[User settings](#)

#### Recent wiki activity

- Google search page edited by Robert Hackett
- Google search page created by Robert Hackett

# Implementation



# Serve 2.0 Implementation: Key Focus Areas

Serve 2.0 tools can improve your

- Recruiting & Publicity
- Training & Education
- Program Management
- Networking



## Serve 2.0 Implementation: Recruiting & Publicity

- **Blog** with entries from current Bonners
- **Facebook Group** for service center with regular updates
- **PR video** profiling center, service partners, service opportunities and events
- **Video** interviews of students, partners, faculty, etc.



## Serve 2.0 Implementation: Training & Education

- Campus service center **wiki** with training & education resources
- **Blog(s)** for reflection, announcements, etc.
- **Videos & podcasts** of training workshops
- How-to **videos** and **screencasts**
- **Video** profiles of issues, partners, places, etc.
- **Social bookmarking** for issue & other web resources



## Serve 2.0 Implementation: Program Management

- Campus service center **wiki** hub with pages for service project teams and other areas
- **Facebook Group** for service project teams
- **Google group calendar** for scheduling and coordinating
- **Google email discussion** list
- **RSS feeds** to keep up with website(s)





## Serve 2.0 Implementation: Networking

- Campus **wiki** serving as a hub of information sharing among all campus service programs/ courses
- Campus service **blog**
- Campus service **Google group calendar**
- Campus service **weekly email** update
- **Facebook Groups** for campus service center/ programs
- **Video & photo** sharing

VIEW EDIT

# FrontPage

last edited by Robert Hackett 2 days, 2 hours ago

Page history



*Middlesex County College's Democracy House is the community service and civic engagement center on campus. Through well maintained partnerships with local non-profits, excellent relationships with faculty and a corps group of students dedicated to service, Democracy House does its part to alleviate need in its community, as well as shape great citizens.*

[Facebook Group](#) | [Blog](#) | [Calendar](#) | [MCC Website](#) | [Contact Us](#)

## Wiki Contents

1. [Staffing & Administration](#)
2. [Bonner AmeriCorps](#)
  - Available Positions
  - Reporting Requirements
3. [Community Partnerships & Site-Based Teams](#) (Google Map of sites)
  - [Elijah's Promise Soup Kitchen](#)
  - [Roosevelt School](#)-Afterschool Tutoring/Mentoring
  - [Lincoln School](#)-Afterschool Tutoring/Mentoring/Comic Book Project
  - [New Brunswick Center](#)-Tax Preperation, ESL Tutoring, Events
  - [Rutgers Cook Student Organic Farm](#)-Volunteers for harvesting and other needs
  - [Salvation Army of Perth Amboy](#)-Afterschool mentoring, food bank, soup kitchen

- Create a page
- Upload/view files
- Upgrade!

- FrontPage
- View all pages
- Settings
- Help

[Tell us what you think about PBwiki 2.0](#)

Search

- Put this page in a folder
- Add Tags
- Page Security default

### Sidebar

- [Front Page](#)
- [Staffing and Administration](#)
- [Community Partners and Positions](#)
- [Recruitment](#)
- [Training](#)
- [Contact Us](#)

[Edit the sidebar](#)

### Folders

No folders are available.

Create a folder...

### Share this wiki

Add a new **writer** to the wiki.

Add

[User settings](#)

# **Working Session**

	Recruiting & PR	Training & Education	Program Management	Networking
Student Leaders				
Bonner Program				
Campus-Wide				
Regional & National				
<b>SERVE 2.0 TOOLS</b>	<ul style="list-style-type: none"> <li>★ <b>Blog</b> with entries from current Bonners</li> <li>★ <b>Facebook Group</b> for service center with regular updates</li> <li>★ PR <b>video</b> profiling center, service partners, service opportunities and events</li> <li>★ <b>Video</b> interviews of students, partners, faculty, etc.</li> </ul>	<ul style="list-style-type: none"> <li>★ <b>Videos &amp; podcasts</b> of training workshops</li> <li>★ How-to <b>videos</b> and <b>screencasts</b></li> <li>★ <b>Video</b> profiles of issues, partners, places, etc.</li> <li>★ Campus service center <b>wiki</b> with training &amp; education resources</li> <li>★ <b>Social bookmarking</b> for issue &amp; other web resources</li> <li>★ <b>Blog(s)</b> for reflection, announcements, etc.</li> </ul>	<ul style="list-style-type: none"> <li>★ Google <b>group calendar</b> for scheduling and coordinating</li> <li>★ Campus service center <b>wiki</b> hub with pages for service project teams and other areas</li> <li>★ <b>Google email discussion list</b></li> <li>★ <b>Facebook Group</b> for service project teams</li> <li>★ <b>RSS feeds</b> to keep up with website(s)</li> </ul>	<ul style="list-style-type: none"> <li>★ Bonner Network <b>wiki</b> serving as a hub of information sharing</li> <li>★ Bonner Foundation <b>blog</b> to announce and share Foundation news</li> <li>★ Bonner Foundation Google <b>group calendar</b></li> <li>★ Bonner Network <b>weekly email update</b></li> <li>★ National Bonner <b>Facebook Groups</b>: National Bonner Love Group, Bonner Congress &amp; Bonner Administrators</li> <li>★ <b>Video &amp; photo &amp; social bookmarking</b> sharing</li> </ul>