

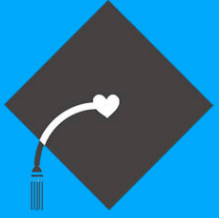
The Bonner Program: Campus-Wide Infrastructure

*‘Access to Education,
Opportunity to Serve’*



A program of:
The Corella & Bertram Bonner Foundation
10 Mercer Street, Princeton, NJ 08540
(609) 924-6663 • (609) 683-4626 fax

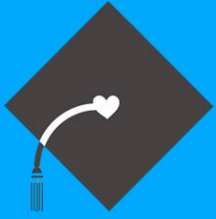
For more information, please visit our website at www.bonner.org



Campus-Wide Infrastructure: Overview

- Staffing
- Governance
- Collaboration
- Working Session

Staffing



Campus-Wide Infrastructure: Bonner Program — *Staffing & Student Roles*

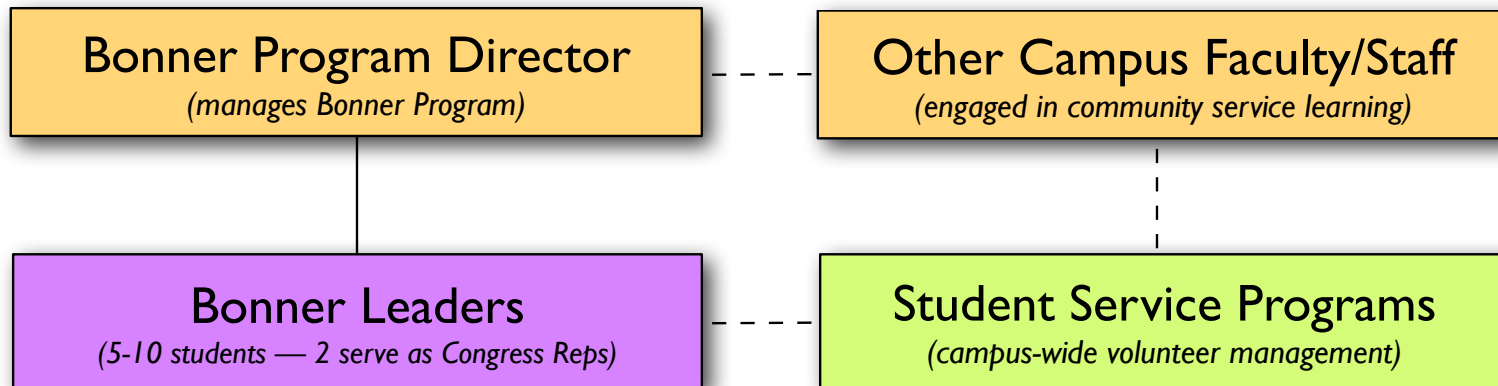
- **Staffing Expectations**
 - Bonner Scholar Program: 40:1 FTE
 - Bonner Leader Program: lead staff assigned to direct
 - Bonner Director reports to Senior Administrator
- **Leverage available positions (e.g., VISTAs)**
- **Student Roles:**
 - Senior Intern(s)—training, site liaison, administration
 - Two Congress Representatives—student voice & leadership
 - Student Leadership Team & committee structure—class meetings, projects, community fund
 - Bonner student liaison with campus-wide student leadership structure



Campus-Wide Infrastructure: Start-Up Model

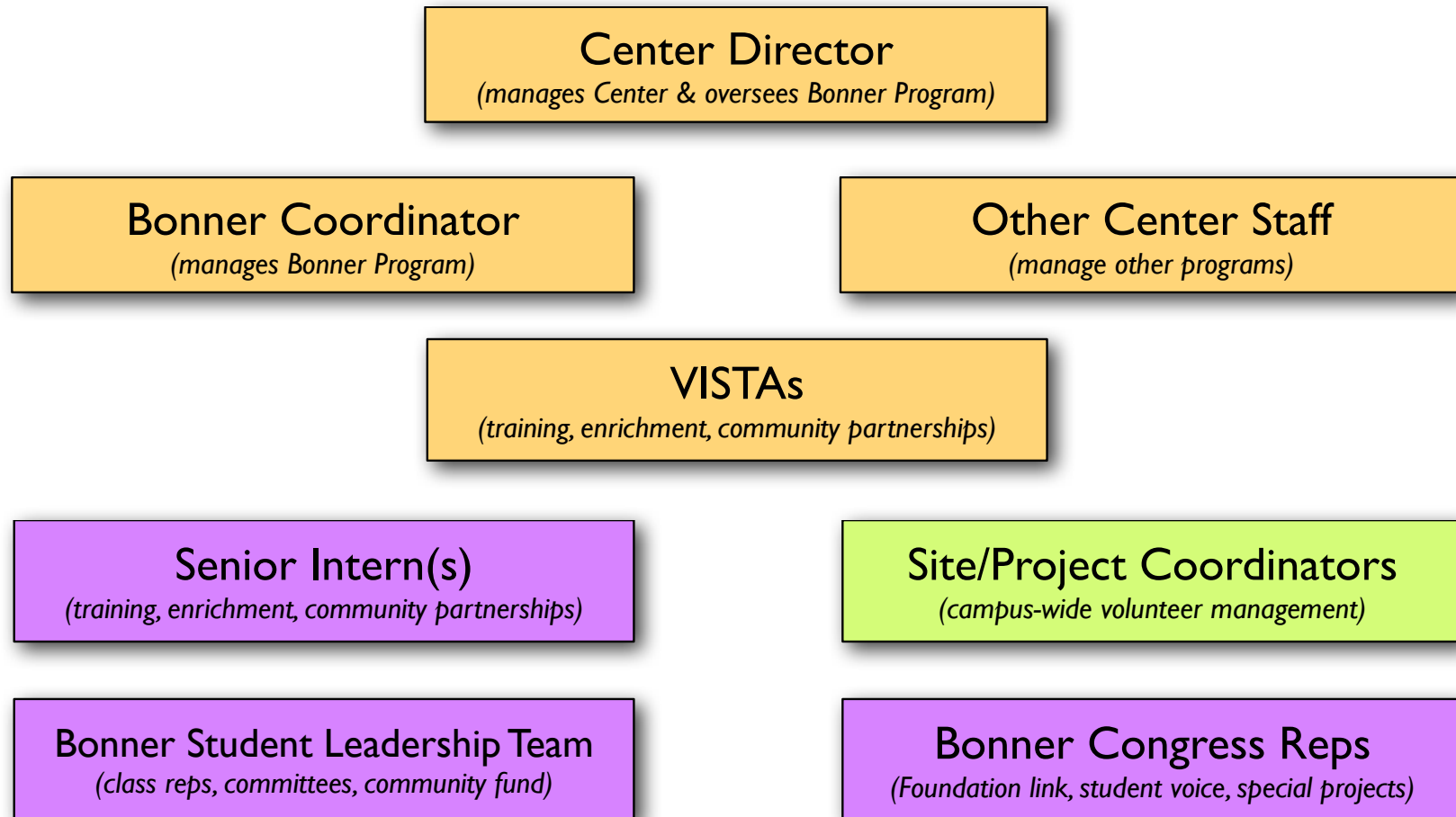
Start Up Model — Limited Staff

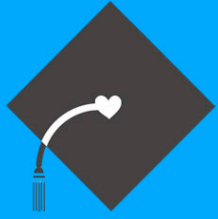
- Bonner Program Director may wear multiple hats
- Begin with 5-10 students
- Progressively add more student each year (by class)
- Link to campus-wide service programs from outset



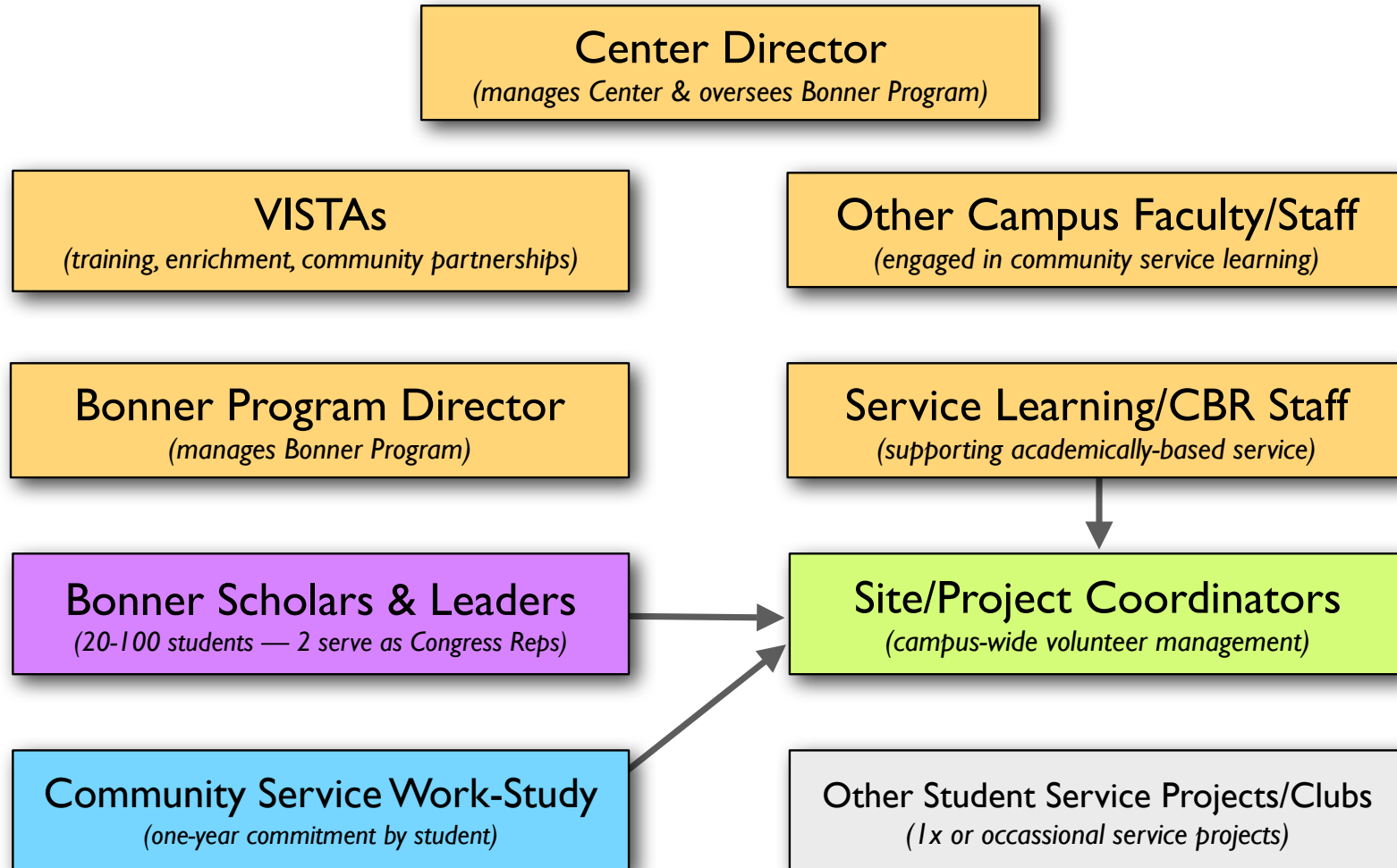


Campus-Wide Infrastructure: Bonner Program — *Staffing & Student Roles*





Campus-Wide Infrastructure: Established Model

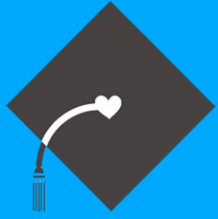


Governance



Campus-Wide Infrastructure: Considerations for Where to House Bonner

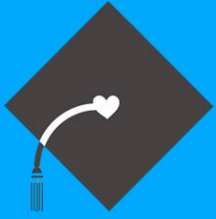
- **Governance** (*best department or division*)
 - Student affairs vs. academic affairs
 - Other innovative options
- **Access to resources**
- **Visibility and location**
 - Access to students
 - Access to faculty
 - Culture of service
- **Institutional respect and future promise**



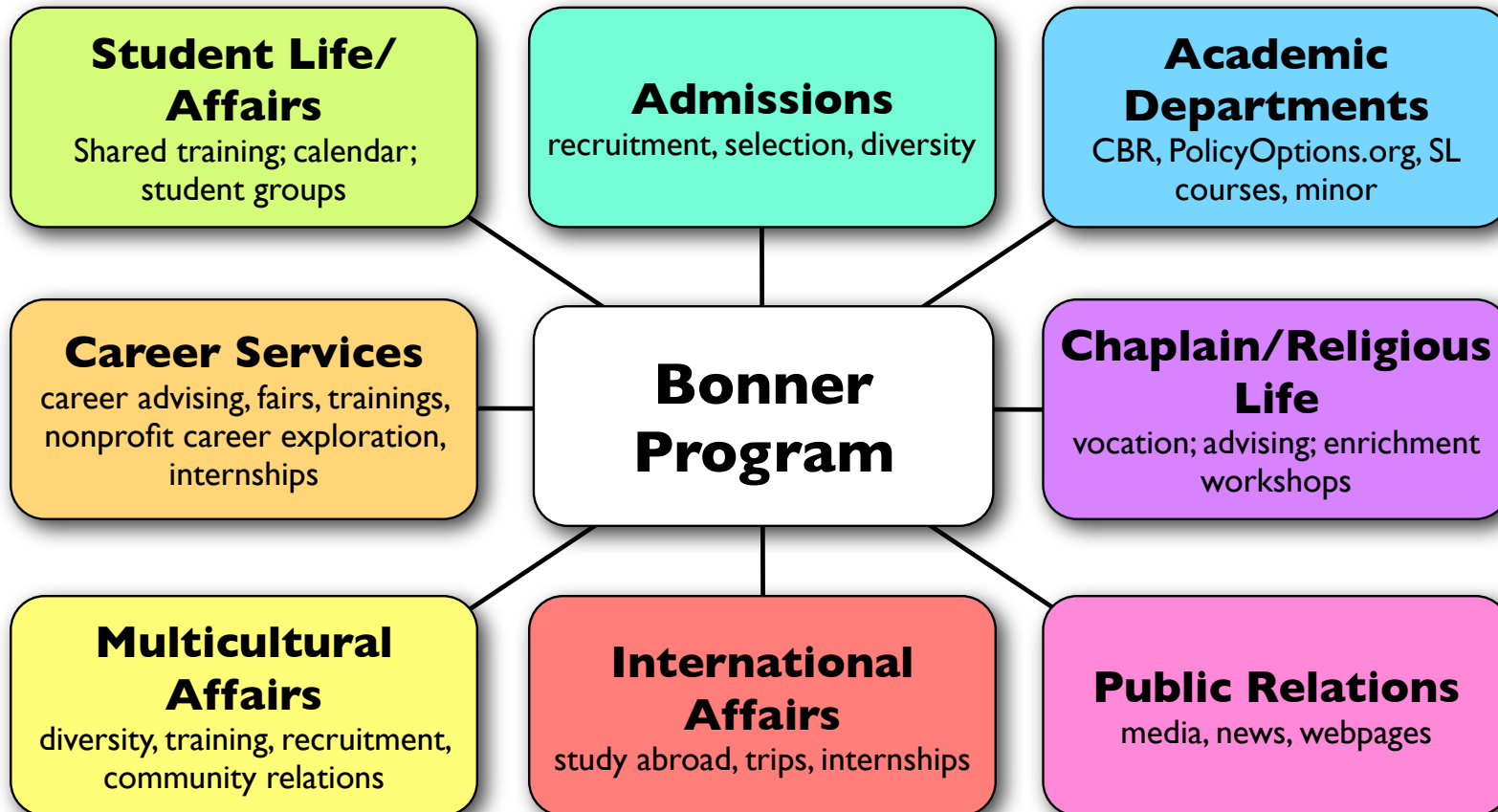
Campus-Wide Infrastructure: Considerations for Where to House Bonner

Type	Strengths	Concerns	Other
Student Affairs	Fit with broader departmental mission; student-led programs; can reach larger scale	Fails to become integrated at the institution's core; lack of curricular change; co-curricular devaluation	Many campuses have started from this vantage point
Academic Affairs	May build around the capacities of faculty & students and, with care, meet more complex community desires	Service can be episodic if only tied to courses; lack of student voice and leadership; staff driven	Having program under Academic Affairs does not guarantee curricular change
Student & Academic Affairs <i>(separate but coordinated)</i>	Campus can provide a broader range of student & faculty involvement and types of civic engagement	Lack of coordination can lead to frustration; students often left to navigate options on their own	This strategy may be equally effective; it largely depends on the leadership & resources
Integrated Center <i>('hub' where curricular & co-curricular are combined)</i>	Leverages resources from & change within curricular and co-curricular; high potential for campus-wide institutionalization	Coordination and decision-making may involve more time & people	

Collaboration



Campus-Wide Infrastructure: Collaborating Across Campus





Campus-Wide Infrastructure: Institutional Support—Some Key Levers

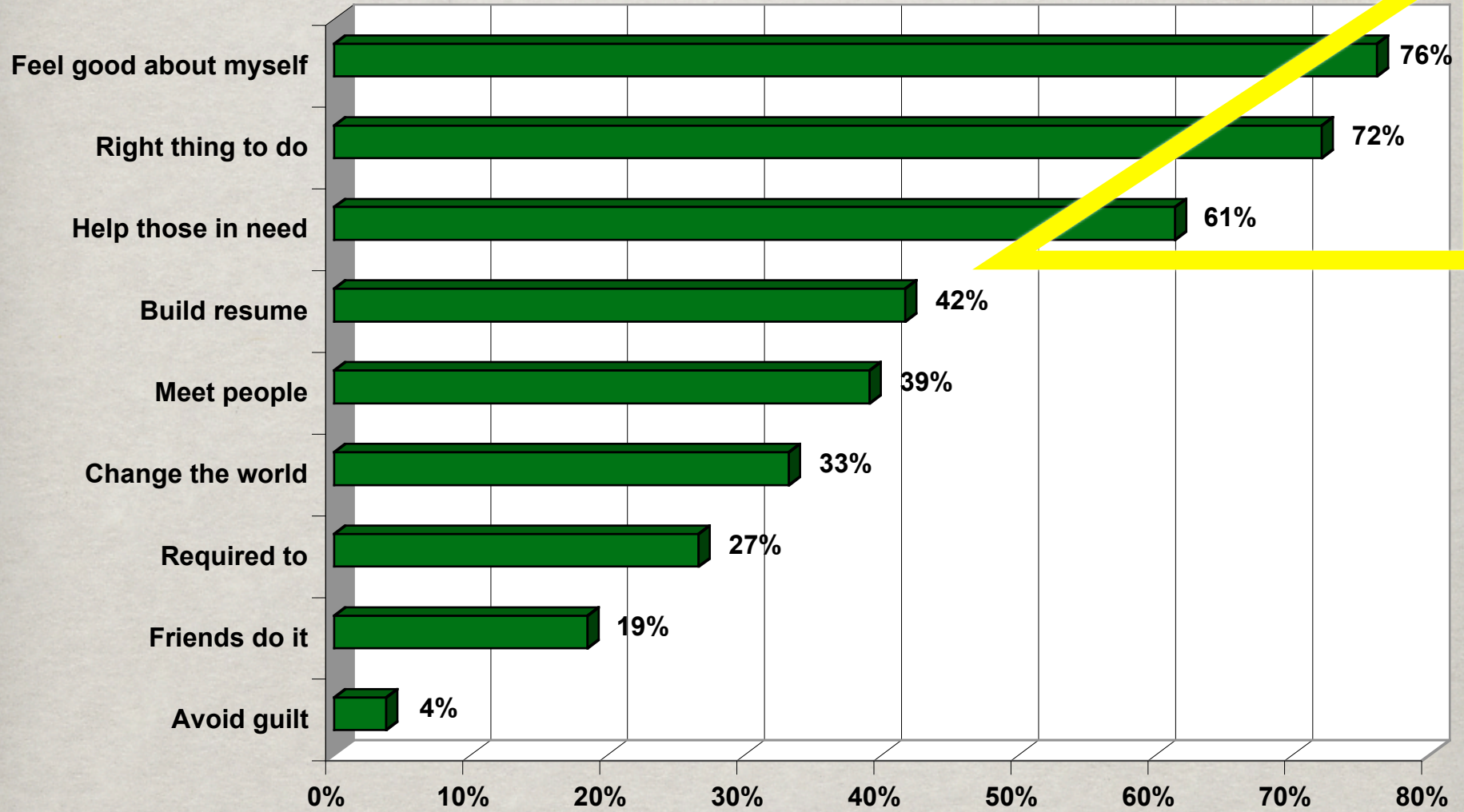
- Bonner Director/Program access to **senior leadership**
- **Financial support for students** to engage in service
- **Visibility** in online and written communications (from recruiting to alumni news)
- **Faculty involvement** and curriculum reform
- **Central place** for service & civic engagement in defining mission, strategic plans, and budget priorities



Campus-Wide Infrastructure: What You Can Do

- Strategically **build your staff**—starting with students
- Creatively consider **new programs**—from more Federal Work Study placements to partnering with national organizations
- **Integrate, integrate, integrate**
- **Communicate** frequently, positively, and strategically with those above you—manage up
- Build a **core constituency** or a working committee of key stakeholders to plan next stages

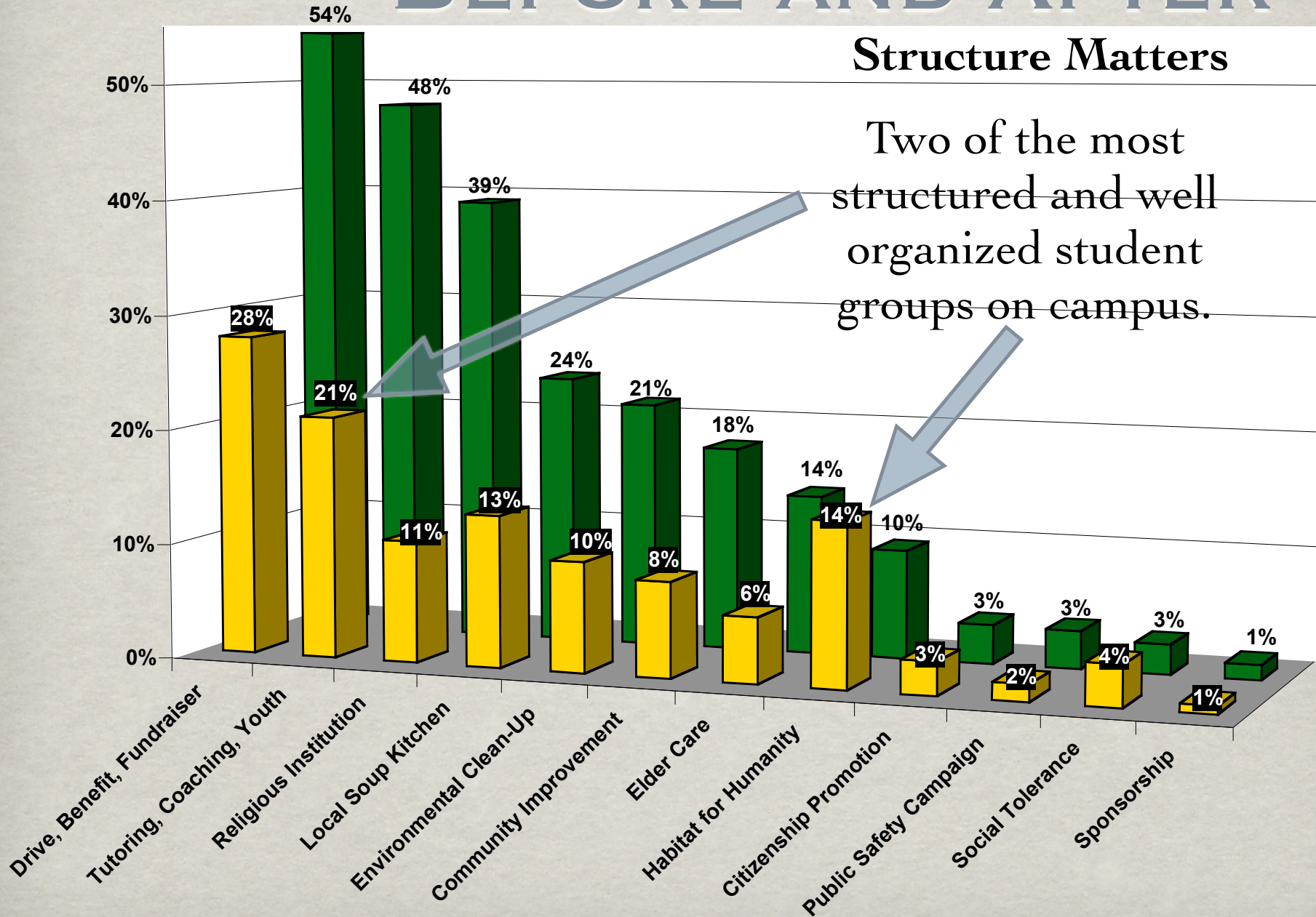
WHY I SERVE?



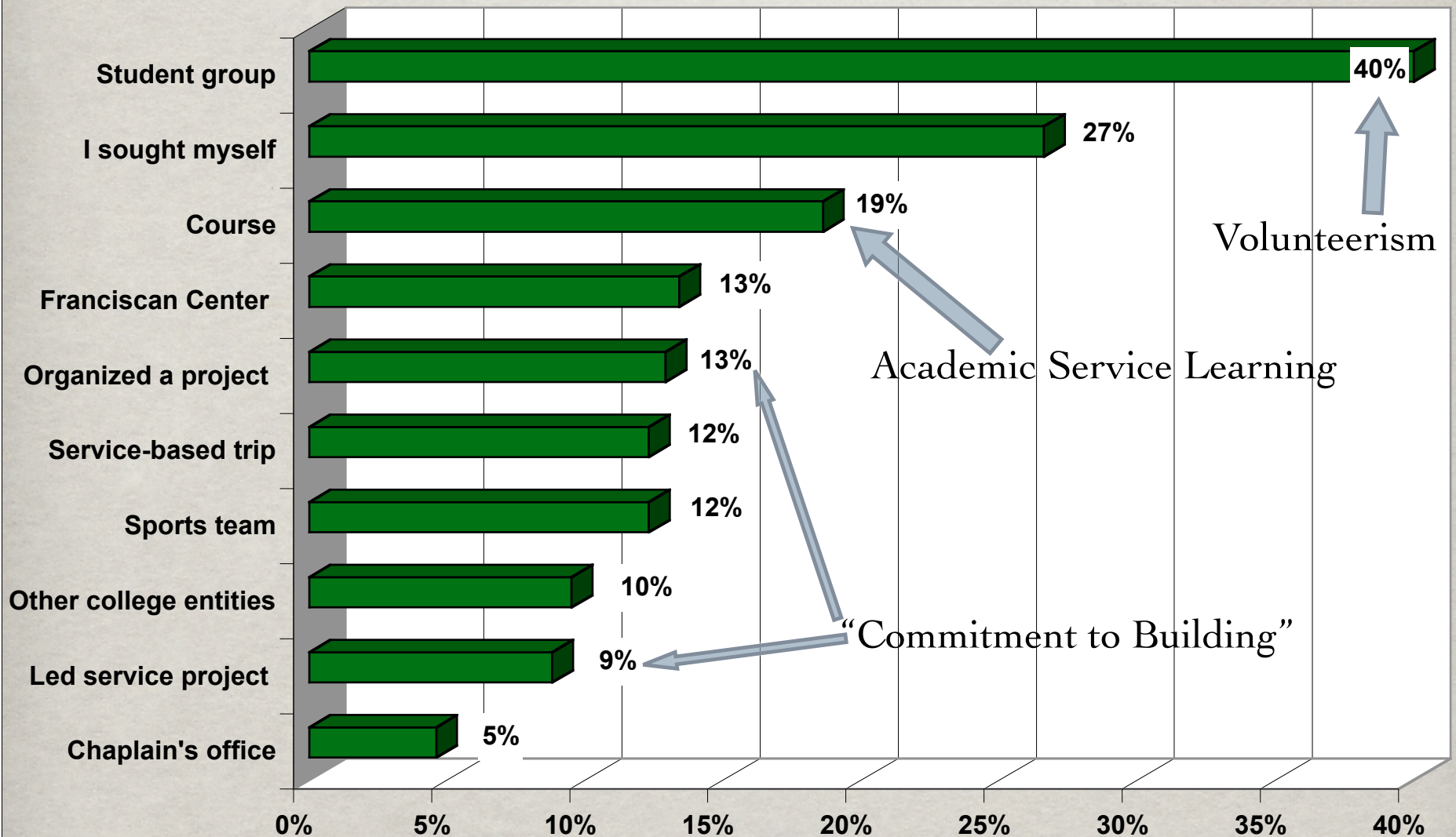
BEFORE AND AFTER

Structure Matters

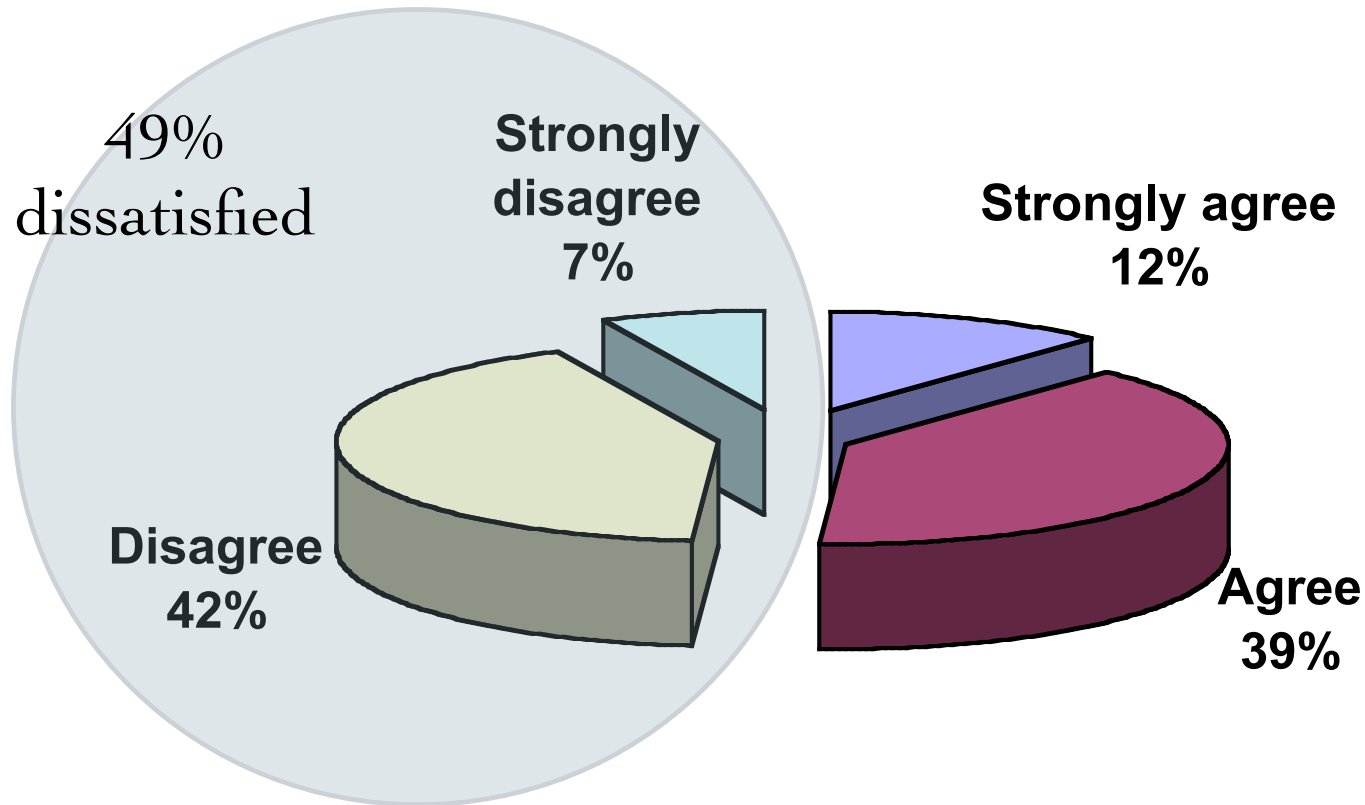
Two of the most structured and well organized student groups on campus.



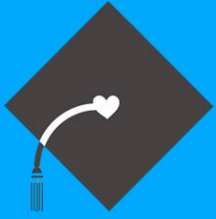
HOW HAVE YOU SERVED?



**“I am satisfied with my personal level of involvement
in service activities here at Siena.”**



Working Session



Campus-Wide Infrastructure: Self-Assessment & Evaluation

- **Collaboration Across Campus:** consistent collaboration between the Bonner Program and other entities on campus, including student life/affairs, academic affairs, career services, financial aid, development, the President's office, and other major departments
- **Campus-wide Student Participation and Voice:** student participation in service and civic engagement campus-wide; dynamic culture of service permeates the campus and students' academic and co-curricular work; student voice is present in many levels
- **Awards and Recognition:** institution clearly recognizes contributions and achievements of students and community members involved in service
- **Public Relations and Visibility:** college/university has strong public relations presence in which community service and civic engagement is visible; civic engagement center and Bonner Program easily found on website; coverage in major publications
- **Institutional Recognition:** community service and civic engagement are central and defining features of the institution's approach to providing a developmental and educational experience for students and for fulfilling its broader mission



Campus-Wide Infrastructure: Resources

- Campus-Wide Centers—Implementation Guide (to be expanded)
- Campus Compact (www.compact.org)
- Barbara Holland's work—matrix on institutionalization
- American Association of Colleges & Universities (AACU)
- Corporation for National Service—AmeriCorps, Learn & Service, VISTA, Senior Corps



Campus-Wide Infrastructure: Best Practices

- Donna Russell, Oberlin College